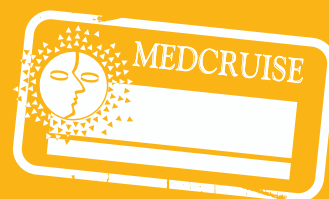


PORT OF PORTIMÃO

DOOR FOR ADVENTURE



Major international cruise lines call
at the Port of Portimão - Algarve



Rotterdam **Vistamar**
Wind Spirit Seabourn Pride Amadea
Princess Danae Thomson Spirit
Seadream II **Thomson Destiny**
Prinsedam **Braemar** Sea Cloud II
Europa Seadream I **Oriana**
Astor Thomson Destiny
Silver Wind **Silver Cloud Oceana**
Royal Clipper **Hanseatic** Wind Surf
Noordam **Fram** Sea Cloud



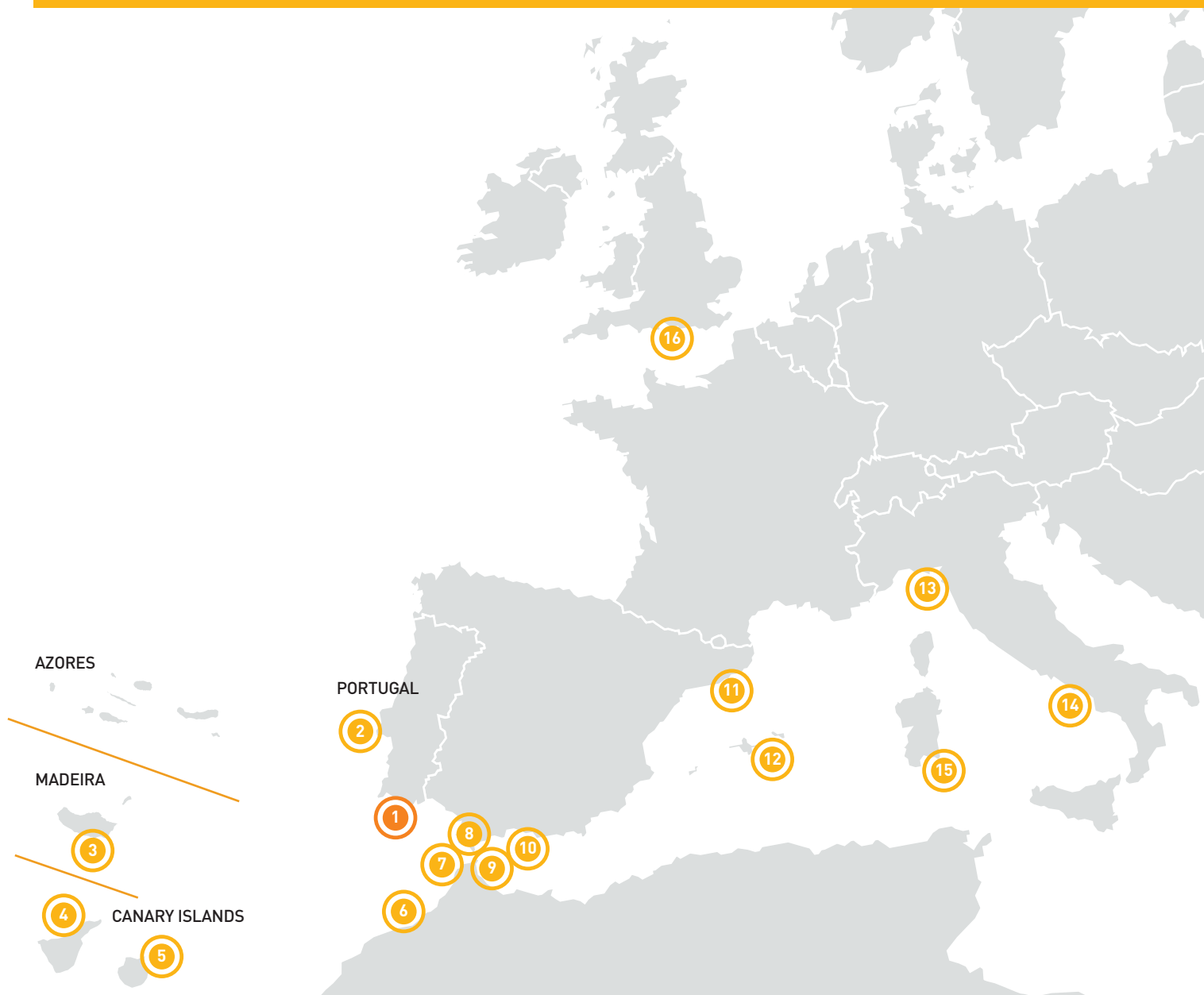
Contents

INTRODUCTION	4
THE CRUISE TERMINAL	6
PORTIMÃO A WORLD OF EXPERIENCES	8
• NATURE - Experiences	10
• SPORT - Experiences	12
• LIFESTYLE - Experiences	14
• TRADITION - Experiences	16
• EVENTS	18
LOOKING TO FUTURE	19
LAGOS, MONCHIQUE, SAGRES AND SILVES	20
ALGARVE	22
DIRECTORY	23

Door for Adventure

In the southwest of Europe, this natural safe harbour has been acting as a gateway between the Atlantic and the Mediterranean Sea for more than two thousand years. It is a unique place, where seafaring traditions blend with a vibrant, cosmopolitan tourist centre.

Come to one of the most famous seaside destinations on the Old Continent and immerse yourself in the aromas of a gastronomy that has become part of the national heritage, the contagious rhythms of a centuries-old culture and a range of shops based on old local traditions.



Port Locations - Distance from Portimão

01 - PORTIMÃO
02 - LISBON | 134 NM
03 - FUNCHAL | 534 NM
04 - TENERIFE | 660 NM
05 - GRAN CANARIA | 693 NM
06 - CASABLANCA | 204 NM

07 - TANGER | 148 NM
08 - GIBRALTAR | 178 NM
09 - CEUTA | 170 NM
10 - MALAGA | 238 NM
11 - BARCELONA | 688 NM
12 - PALMA DE MAIORCA | 624 NM

13 - GENOA | 1020 NM
14 - CIVITAVECCIA | 1060 NM
15 - CAGLIARI | 902 NM
16 - PORTSMOUTH | 980 NM

NM - Nautical Miles



Location

The Port of Portimão lies on the route to the Mediterranean Sea, to the islands in the North Atlantic and of cruise ships plying their way across the Atlantic.

Just one night's sailing distance south of Lisbon (134 nautical miles), Portimão is either the first or the last port of call for every cruise ship on the world's most popular holiday cruises.

The Port of Portimão cruise ship facility is located in the city centre, near excellent beaches, hotels, shopping, dining and entertainment, an attractive start and finish to any cruise experience. It is also the gateway to the Algarve, the world famous southernmost region of Portugal.

Access

The port is a stone's throw away from the Algarve's main cities and only 35 minutes from Faro International Airport via the A22 motorway, and 10 minutes from the local aerodrome, where there are special facilities for private aeroplanes. By road, the A22 joins the A2 and A49 motorways, with Lisbon and Seville just two and half hours away. The city station is 5 minutes away, where trains can be caught that link up with the national and European railway network.

Cruise Terminal

The cruise terminal has a quay more than 300 metres long, where two ships can moor at the same time. Equipped with a terminal building with the capacity to embark up to 2000 passengers per hour, it also has a parking area for passenger coaches, a shuttle to the centre of the city and a taxi-rank.

Along the riverside walkway, you can find connections to the city's main public transport, in particular minibuses which run every 15 minutes to the most important places in the city.

UPGRADING THE TERMINAL

The Port of Portimão will continue to offer cruise lines and operators conditions to allow larger vessels to moor alongside. The facility is a key step in attracting more international cruise ships to the Algarve.

In the light of the growing demand for cruise ship capacity, the Portimão Port Authority has dredged the harbour, channel and turning basin to 8m and a turning diameter of 350m has been available since 2008. This means that ships of up to 210m in length can enter the harbour in safety. As a result almost all the ships that currently call on Portimão will be able to dock as opposed to anchoring offshore, meaning passengers will enjoy greater safety and convenience.

The project to extend wharf facilities includes a 700m-long berth capable of handling two 2000-passenger cruise ships at once.

High performance foam filled fenders are fitted on the quay side.

Portimão Port Authority is improving the wharf facilities, and constructing new accesses for passenger pick-up and drop-off to accommodate a new service for the cruise ships, as well as facilities for security and cruise operations.

Ramps and other facilities for wheelchair users are also to be provided.

APPROACH INFORMATION

Chart datum minimum water depths on approach:

Bar: 8.0 metres | Channel: 8.0 metres

Turning basin: 8.0 metres

Channel/Berth water density: salt water – 1.025

Average tide height basis MLWS/MHWS: 0.56/3.45 metres

Average tide height basis MLWN/MHWN: 1.38/2.64 metres

Type of Bottom: sand

PILOTS

CALL: Pilotosportimão

TELEPHONE: (+351) 967 423 036 (24 hours)

FAX: (+351) 289 812 903

FREQUENCY: VHF Ch 14; 16

HOURS: 24 hours

PROCEDURE:

(1) Pilotage is compulsory

(2) Pilot boards 1 n mile S of the W breakwater

(37°05, 52' N 008°31,77' W) WGS-84

MEGA YACHTS FACILITIES

This beautiful inner anchorage in calm sheltered waters nestles amid heavenly beaches and honey-coloured cliffs. The inner anchorage lies north of the East breakwater, clear of the main channel, in depths of at least 5 metres. It has good holding ground and is large enough to accommodate yachts of up to 80 metres LOA.

The Port Authority offers special facilities for tender boats for every luxury craft.

The Port of Portimão shipyards offer a wide range of services for mega yachts, from annual maintenance to refits and repairs.

BERTH INFORMATION / RESTRICTIONS

Berth name: PORTIMÃO CRUISE TERMINAL

Berth length: 330 metres

Berth height above chart datum: 5.3 metres

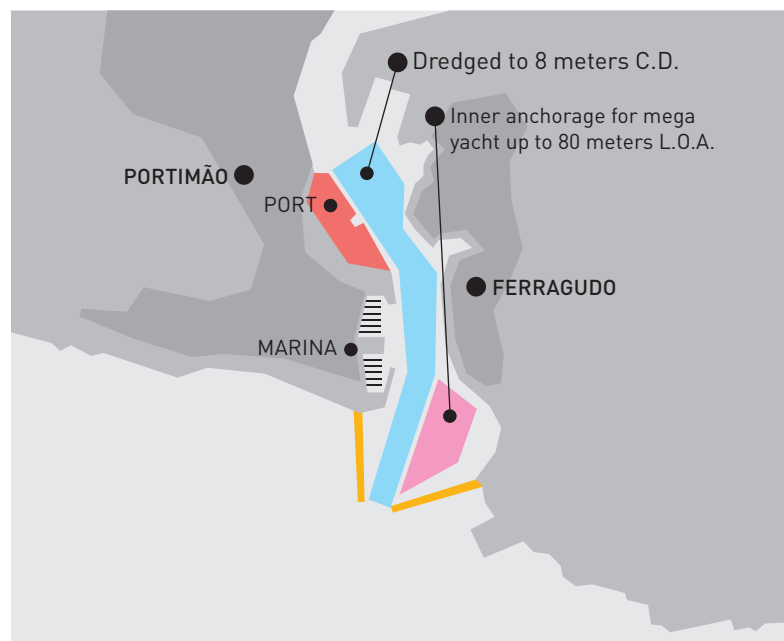
Maximum Vessel LOA: cruise ships: 210 metres; cargo vessels: 140 metres

Maximum Vessel draft: 7.0 metres (up to 8.5 metres with tidal restrictions)

Maximum draft alongside: 9.0 metres

Roll-On / Roll-off facilities: terminal available

NOTE: Ships with dimensions exceeding those stated above may be accepted subject to the specific and prior approval of the Port Authority's Pilotage Department.





SERVICES TO SHIPS

The terminal can provide fresh water, electricity, bunkering and garbage and waste water collection.

OTHER SERVICES:

CRANES - The quayside is equipped with 2 cranes:
1 X 6 tonnes SWL and 1 X 12 tonnes SWL

FENDERING - The quayside is fitted with floating rubber fenders of a non-marking type.

TENDERING - Cruise ships anchored offshore can tender passengers to the passenger terminal (floating pontoon).

TUGS - One 400 bhp tugboat is available full-time. A 2,400 bhp tugboat is available when requested 24 hours in advance.

ROLL-ON / ROLL-OFF FACILITIES - Terminal available

PORT AUTHORITY

The Port of Portimão comes under the authority of the INSTITUTO PORTUÁRIO E DOS TRANSPORTES MARÍTIMOS - DELEGAÇÃO DOS PORTOS DO SUL

PASSENGER SERVICES

The terminal building offers a range of services for passengers' comfort and convenience:

- Check-in facility for passengers and luggage
- Passport Control
- Bar/Coffee Shop with Terrace
- Duty Free Shop
- Tourist Information Office
- Handicraft Shop offering a range of Regional Products
- Vending Machines
- Cashpoint/ATM
- Toilets
- Public Telephones
- There is a taxi-rank and a coach park.
- Minibuses run between the port and the main tourist sites every 15 minutes.

Regular Ferry: there is a weekly cargo/car/passenger ferry service from Portimão to Madeira and the Canary Islands. The service departs from Portimão Harbour every Sunday at noon.

Security

The Port of Portimão complies fully with the ISPS code (International Ship and Port Facility Security Code). CCTV has been fitted and there is 24 hour continuous surveillance.

Safety

The Port has a marine pollution combat service which includes inflatable barriers and a water cannon. A tug-boat equipped with sea fire fighting equipment is also available.



PORTIMÃO, A World of Ex

The variety of experiences and contrasts on offer in Portimão makes it a unique place to visit.

Whether you want to relax and recharge your batteries or enjoy an active holiday, Portimão's distinct character means you are sure to take home unforgettable memories of your stay.

The fabulous, fine sandy beaches have always been one of the area's main tourist attractions and visitors can't help but fall in love with this sunshine paradise, returning year after year.

Today, however, the city's wealth of cultural and commercial attractions, together with its energetic, revamped tourist industry, put Portimão firmly on the map as top all-round destination that will satisfy every visitor's wishes.

The huge variety of options available means every visitor can enjoy their preferred ambience at the rhythm that suits them best.

The possibility of direct contact with nature along the beach, by the river or inland, the variety of sports on offer, water sports and golf in particular, the renowned seafood and fresh fish, and the rich traditions and heritage all serve to enhance a city that is increasingly considered worldwide as a top tourist destination.

Already recognised as a pulsing, dynamic city and as host for a variety of important national events, the "city of experiences" offers no end of surprises combined with the unrivalled friendliness of the people who live there and whose hospitality is second to none.



xperiences

Area: 183 km²;
Main economic activity: Commerce and Tourism;
3 Parishes: Portimão, Alvor and Mexilhoeira Grande;

Inhabitants: 48,611;

8 km of beaches;

over 3,000 hours of sunshine;

Average Temperature:

Annual – Air/ 17.7°C (Praia da Rocha); from June to September air temperatures can reach 30°C;
 Mean Annual Temperature – Water 17.4°C (Algarve)

Algarve International Motor Racing Circuit; Marina;
 Casino; Cruise Port; 500 shops; 900 restaurants and pubs.

Portimão - Faro: 67 km | Lisbon: 278 km | Seville: 250 km





Nature experiences

City-dwelling nature-lovers visiting Portimão will be delighted at the chance to recharge their batteries by taking part in activities by the sea, on the beach, by the river or inland.

For many, a day at the beach is synonymous with fun. And in the “city of experiences”, the beaches are second to none: from the vast sands of Alvor to the small secluded coves, family beaches and the newly upgraded and fully equipped facilities of the signature Praia da Rocha beach, the only difficulty is deciding where to go.

A cruise along the coast in a yacht or motorboat to watch the dolphins, a sail up the River Arade to Silves, or a ramble organised by one of the environmental associations who know the area’s natural treasures better than anyone, are truly unforgettable “nature experiences”.

Riverside

The riverside areas of Portimão and Alvor, and the Praia da Rocha boardwalk are ideal spots to enjoy a walk in natural surroundings. The Praia da Rocha boardwalk stretches for 2.4km along the sand; bordered by various restaurants and open-air cafés it leads to Portimão Marina.





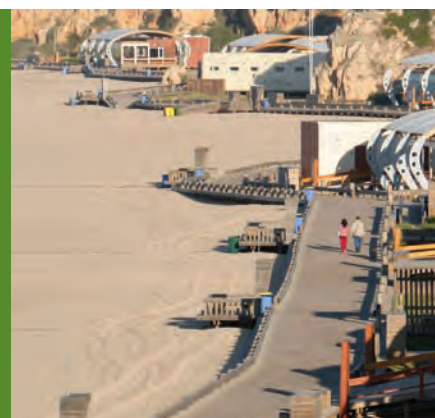
Bicycle rides or walks along the banks of the River Arade and the Ria de Alvor are also much appreciated by visitors who enjoy observing the plants and animals. The environmental wealth of the Ria de Alvor is protected under the European Union's Natura 2000 network.

There are countless opportunities to come into contact with nature along the Praia da Rocha boardwalk and the “Três Castelos” (Three Castles) Trail. Their beauty is breathtaking and you are sure to enjoy moments of sheer delight.

Beaches: Accesses and quality

Portimão invests in equal access to leisure facilities for the disabled and physically challenged. Accessible beaches offer adapted pedestrian access, ordered car parking with room for vehicles transporting the physically challenged, access ramps on to the sand, walkways leading as close to the water as possible, and appropriately-designed access to adapted toilets and the first aid post.

The municipality's beaches have been awarded the Blue Flag, which guarantees the quality of the water and sand, accesses, and lifeguard and assistance facilities, among others.





Sports experiences

Anyone who wants to “experience sport” will be spoiled for choice in Portimão. Not only because of the fantastic range of options on offer but also because of the quality and uniqueness of the conditions available for each type of sport.

Indeed, the excellent conditions, combined with the city’s capacity in terms of hospitality and organisation, mean that the city regularly hosts major international sports events such as the World Championship in Rhythmic Gymnastics, the World Powerboat F1 Championship, the World Kitesurf Championship and the Med Cup, among many others.

Golf

The Algarve is already recognised internationally as a “golfing paradise” and the facilities for the sport in the Portimão area are superb. Whether you just want a relaxing game or a competitive 18 holes, Portimão’s proximity to several golf courses means you can enjoy the experience to the full. There’s the Penina Championship Course, the first to be built in the Algarve and a living tribute to Sir Henry Cotton, the great British golfer who designed it. The courses managed by the Pestana Group are a prime example of top quality, from the Alto Golfe course near Alvor to Vale de Pinta and Quinta do Gramacho close to the town of Carvoeiro, or the more recent Silves Golfe. The 9-hole Vale do Milho course is ideal for beginners while the Golfe do Morgado, near Monchique, is one of the longest in the region. The quality, variety and natural setting of the courses, together with the climate, were once again acknowledged with the prize in the category “Europe’s Best Golfing Destination” (voted by the public).





On sea and on land alike, there are many options available for those who live for sport even during their holidays. The city offers truly exceptional conditions for horse riding, sailing, cycling and, in particular, golf.

The sea, however, is where Portimão absolutely comes into its own. The clean, fertile seabed is an open invitation to divers, and the excellent natural conditions along the coastline are like a magnet to aficionados of surfing, bodyboarding, windsurfing, water skiing, jet-skiing, canoeing and sailing. There are also fine conditions for big game fishing; some of the largest blue and white marlin ever to have been caught the world over were caught in the waters off Portimão.

For those who get their buzz from speed, whether as a spectator or a participant, Europe's most modern, multifaceted motor racing circuit is guaranteed to provide even the most fearless with a breathtaking experience..

Algarve International Race Track

Throughout the year, the Algarve International Motor Racing Circuit hosts some of the most exciting competitions in the racing calendar, the highlights being the Superbike World Championship, the FIA GT Championship, the A1 GP World Cup and the Le Mans Series.

With its unique track, which led to it being elected "Motorsport Facility of the Year" by the "Professional Motorsport World Expo Awards 2009", it is regularly used by the main Formula 1 teams for practice sessions and testing with today's top drivers taking part.

The track is surrounded by trees and green spaces just ten minutes from Portimão city centre, and a karting circuit and a sports complex are planned along with other amenities.





Lifestyle experiences

It's worth getting to know Portimão just for itself, to feel its incomparable lifestyle which reflects the perfect combination of experiences.

Lovers of good food will take unrivalled delight in sampling the city's culinary offerings: everything from the highly traditional and typical grilled sardines (the city's signature dish) to a seemingly endless variety of fish and seafood so fresh you can even taste the sea... a veritable feast for the taste buds! Rich, colourful regional sweets take shape under experienced hands, skilled in centuries-old traditions. And a delicious bitter almond liqueur that adds the finishing touch to a meal fit for a king is also the setting off point for some hugely enjoyable moments.

Bustling commerce is another abundant attraction in the city's lifestyle. "Shopaholics" will be thrilled at the diversity of shops to be found in the city centre. Off licences offering wine tasting, art galleries, and street artists capturing fleeting moments of perfection, are all ingredients that, nicely blended in just the right proportion, contribute to the unmistakable whole that is the lifestyle of Portimão.

Praia da Rocha Casino

Vibrant gaming rooms and exciting international shows make this casino one of the main attractions of Portimão. Classic, but with a discreet and intimate style, it offers glamorous surroundings complemented by excellent service. Apart from the show rooms, restaurants and bars, the modern gaming rooms have Slot Machines, "Banca Francesa", Black Jack, American Roulette and Poker.





As night falls, Portimão slips into a different rhythm. Dozens of restaurants and bars light up the streets, and areas such as Alvor and Praia da Rocha take on a whole new look. From the most typical to the most modern, the most romantic to the most avant-garde, there's so much variety that everyone will find something they like, knowing that the buzz will continue into the small hours.

The abundance of street entertainment, the traditional events and festivals, the different styles of music – popular, folkloric, classical or international – the firework displays, the sound and light shows, jazz and dance, all help to make the city's nightlife the longest-lasting, most exciting and most sophisticated in the Algarve.

Nevertheless, anyone looking for a way of spending their evening in more tranquil surroundings will have no difficulty finding a serene spot in which to drink in the scenery: beachfront bars and open-air cafés overlooking the river, where the quality of service blends nicely with the moonlight.

Portimão Marina

Owing to its natural characteristics and the excellent technical and logistical conditions it provides, Portimão Marina is the operations base for a number of nautical sports competitions which are regularly held off the coast of Portimão. Regarded as one of the best marinas in the world in 2005, the following year it won the prestigious Jack Nichol Marina Design Award from the Permanent International Association of Navigation Congresses; it is located in the safest harbour on the Portuguese coast, on the route from the Atlantic to the Mediterranean, offering unparalleled accommodation in a setting of great beauty. There's everything you need, even an exclusive beach.





Tradition and Culture exp

A land of fishermen and seafarers, these professions have given rise to some of the main folk traditions of Portimão. The folk music and the old songs that used to be sung by the fishermen as they worked reflect an entire society that grew and developed accompanied by the scent of the sea air. Music was a welcome release from toil and now provides lively entertainment at hotels and restaurants and at traditional festivals and events.

Other attractions include the regional handicrafts, especially rich in items made of cane and colourful pottery, and very particular ways of celebrating special events such as religious feast days.

Visitors who enjoy finding out about the past are sure to be delighted with the municipality's wealth of art and history, especially the Arab and Roman remains and the well-known megalithic monument of Alcalar, which bears witness to the existence of one of the earliest known local communities, dating back to the 4th and 3rd millennia bc.

Portimão Museum

With strong ties to the sea, the rich past of this land, which dates back to the dawn of history and was occupied by Phoenicians, Greeks, Carthaginians, Romans and Arabs, can be revisited at the Portimão Museum.

Opened in 2008, the museum has won public recognition on a number of occasions in the fields of both culture and tourism, and it was awarded the 2010 Council of Europe Museum Prize, which attests to the quality and importance of its exhibitions.

Operating in a former fish canning factory and in a unique architectural style, the Museum is located just a few metres from the Portimão Cruise Ship Harbour, on the way to the city's lively shopping and leisure area.





periences

The very wealth of its architecture and the ancient traditions that have endured to the present day enrich a city that plays host to countless activities of a cultural nature. Packed with culture and tradition, Portimão is far more than just a beach resort.

Some of the landmarks you will see on a stroll round the “old town” in the centre of Portimão are the lovely Igreja Matriz da Nossa Senhora da Conceição (Main Church of Our Lady of the Conception), which dates back to the 15th century, and the imposing building of the 17th century Jesuit College.

One suggestion for a place to visit for people who want to find out more about the culture of the places where they stop over, is the Manuel Teixeira Gomes House, dedicated to the life and work of the city’s most notable citizen, who distinguished himself as a diplomat, writer and politician, and was president of the Portuguese Republic from 1923 to 1925.

Worth a closer look in the pretty, charming fishing village of Alvor, with its narrow alleyways and whitewashed houses that reflect the blue of the sky and the rays of sunshine, are buildings such as the Palácio Abreu (Abreu Palace), the Igreja Matriz (Main Church), with its magnificent 16th century Manueline portal, and the Capela da Misericórdia (Chapel of Mercy).

Portimão Municipal Theatre

TEMPO – Portimão Municipal Theatre is the venue for surprising experiences in art and culture, and quality is guaranteed. Theatre-goers will have the opportunity to enjoy shows featuring dance and music, new circus and literature in a city-centre venue that combines tradition with modernity. Visitors will be stunned by the original façade of the emblematic former Palacete Sárrea, built towards the end of the 18th century by a nobleman from Portimão, and which today houses the municipal theatre.





High-profile events

Whenever you arrive at the Portimão Cruise Ship harbour, there are always a thousand and one interesting things happening, including sports competitions of international standing, and must-see artistic and cultural events.

Some examples are the F1 Powerboating GP, the Med Cup in Sailing, the Volvo Ocean Race, the International Rhythmic Gymnastics Tournament, the Beach Soccer Mundialito, the Belmonte International Equestrian Tournament, the Kite Masters Portimão World Tour, the Cup of Portugal in Parachuting and the Nights of Opera, the best musical productions with well-known artists and orchestras.

And tradition too is never far away, with events such as the Sardine Festival, the Festival of Arts and Flavours and the Cockle Festival, along with other events of an essentially popular nature.

Portimão Arena

One of the most modern areas of the city, can be adapted to any event and is inserted in the Fair and Exhibition Park of Portimão. This pavilion can host sporting and cultural events, but also meetings, conferences, banquets and corporate events. It seats up to eight thousand people in its various spaces and is the main hosting room of Portimão. Every year this is where important international events take place, especially those related to rhythmic gymnastics, handball or the countless live shows, inserting Portimão on the route of the great international events agenda.





Looking to the Future

Portimão is a dynamic destination, and one full of opportunities, that attracts ambitious, visionary projects.

Anyone who visits Portimão will undoubtedly return home with the firm intention and heartfelt desire to return! And you can be sure that, when you do pay another visit to the city, your expectations of discovering something new in the municipality that shelters the gateway port to the Mediterranean will be met.

Some of the major developments underway in the city are the future **Municipal Sports Complex** and the **Algarve International Aerodrome**, two decisive steps forward in the provision of infrastructure of international quality. The **Urban Renewal Project for the Portimão Riverside Zone** will further enhance the city's finest calling card.

In Alvor, where nature has also been generous, the **Seafront Intervention Plan** will create a boardwalk along the beach, a caravan park and a support structure for kitesurfing and windsurfing.

The next step, which is already underway, is the creation of a **Cinema City** with the capacity to produce a whole range of multimedia material at the purpose-built technology park, ranging from films and videos to console games and many other sources of entertainment and information.

There will also be plenty of fun on offer, with a fun park where the imaginary world of cinema will be providing fabulous experiences.

Portimão: the city that welcomes the world with open arms!

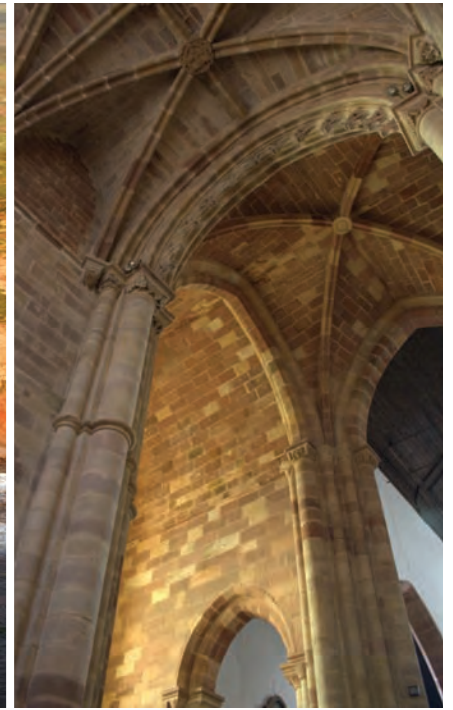


Lagos, Monchique, Sagres and Silves

Lots more to discover nearby

Whilst Portimão is known as the “capital of the Western Algarve” due to its being the area’s largest and busiest city, there are lots of other things to discover nearby. There are many excursions available to give visitors the opportunity to enjoy fantastic experiences in cities with established personalities and which tell tales of our ancestors that deserve to be heard.

The city of Lagos with its fabulous sea-facing walls is rich in history and natural beauty and Sagres is the westernmost point of Europe. The fortress, from which the sailors set off on their voyage to explore the world, is a local landmark. In Silves, the ancient Moorish city that was once the capital of the Algarve, the walls of the region’s largest castle are impressive, and in Monchique, renowned for the curative powers of its thermal waters, the highest point in the Algarve stands out amid the greenery of the landscape.



LAGOS & SAGRES

LAGOS - Lagos is a fascinating and historic town. Its sturdy medieval walls testify to its importance in the 15th century, when its shipyards built the caravels which sailed on historical voyages of exploration. Today, the narrow bustling streets are full of interest. Reminders of the past can be seen around every corner, including the site of Europe's first slave market and the ornately gilded Chapel of Santo Antonio. (Church is closed on Mondays).

SAGRES - Prince Henry the Navigator had his School of Navigation here and from Sagres his sailors set out to explore the world. The windblown Cape St. Vincent, with its 200-foot-high cliffs facing the Atlantic lies at the extreme southwest of Europe - the point where the earth ends and the sea begins. From Sagres, the views out over the Cape and the open Atlantic are quite magnificent.

MONCHIQUE & SILVES

MONCHIQUE - A delightful, old-fashioned mountain village. On your way up to the highest village in the Algarve, you will be able to admire a different type of vegetation, not found in other parts of the region and enjoy some free time to buy souvenirs.

CALDAS DE MONCHIQUE - Set in a ravine you will discover a delightful, old fashioned spa village whose waters have been used for medicinal purposes since Roman times.

SILVES - The former capital of the Moorish province of Algarve was known as Xelbe by the Moors who built the red sandstone castle. Crusaders' tombs are to be found in the cathedral. Explore the ramparts of the castle from where there are wonderful views of the woods, fields and the sea beyond. Discover the town's recreational park and visit the Cork Museum at "Fábrica do Inglês". As coaches are no longer permitted in Silves, there will be a minibus shuttle service to take you up to the historical centre. Please note: the tour does not include water tasting in Caldas de Monchique.

JEEP SAFARI

Join us for an exciting off-road experience by jeep and see the Algarve countryside - travelling along routes inaccessible to tour coaches!

Setting off from Praia da Rocha your open top jeep will follow country trails towards the Monchique mountains, passing villages such as Porto de Lagos, Monchicão and Bemposta and giving you plenty of opportunity to admire the scenery before stopping in one of the small inland villages for a taste of one of the most famous regional products, aguardente - the local firewater! Your driver/guide will take you through the lush countryside of the "unspoiled Algarve", passing small villages lost in the hills.



Port of Portimão

at the center of the Algarve

With some 200km of coastline abounding with bays, cliffs, grottoes, rocky beaches and expansive sands, not to mention the three thousand hours of annual sunshine and the pleasant year-round climate resulting from the influence of the nearby Mediterranean, the Algarve is one of Europe's most sought-after holiday destinations..

A little corner of a country that appreciates the pleasures of life and offers the ideal conditions in which to recharge your batteries, gain a new lease of life and enjoy a whole range of experiences.

A unique blend of different surroundings – the coast, the countryside and the uplands – provides the setting for sport and adventure, thermal spa treatments, golf and even fun theme parks, all within the space of a few kilometres.

It's well worth anchoring in Portimão, visiting this "gateway to adventure" and feeling the beat of the Algarve, a recognised thrill-filled destination.

ALGARVE

www.visitalgarve.pt
400,000 inhabitants
5.5 million tourists
Main economic activity: Tourism
Various 4- and 5-star hotels
3 casinos
4 marinas
35 golf courses
IAGTO Established Golf Destination of the Year 2006
1 international airport

PORTUGAL

www.visitportugal.com
11 million inhabitants
10 million tourists
Capital: Lisbon (1.5 million inhabitants)

Directory

OFFICIAL BODIES:

Port Authority

Instituto Portuário e dos Transportes Marítimos, IP
Delegação do Sul

Cais Comercial de Portimão

Gare Marítima

8500-844 Portimão - Algarve - Portugal

Tel.: +351 282 450 200 | Fax.: +351 282 450 230

E-mail: geral.portimao@imarpor.pt

www.portofportimao.com | www.imarpor.pt

Portimão Urbis

Tourism Unit

Parque de Feiras e Exposições de Portimão

8500-726 Portimão - Algarve - Portugal

Tel.: +351 282 410 444 | Fax: +351 282 410 445

E-mail: info@visitportimao.com

www.visitportimao.com

Miltours Portugal - DMC

Monte da Ria, Lote 2

8005-303 Faro - Algarve - Portugal

Tel.: + 351 289 001 772 | Fax.: + 351 289 001 774

E-mail: groups.algarve@miltours.pt

www.miltours.pt

Portimar - DMC

Edifício Portimar, Alto do Quintão

8500-833 Portimão - Algarve - Portugal

Tel.: +351 282 470 002 | Fax: +351 282 470 053

E-mail: groups@portimar.pt

www.portimar.pt

Triunfante do Algarve - Agência de Viagens Lda.

Rua França Borges nº1 1ºE

8500-674 Portimão - Algarve - Portugal

Tel.: + 351 282 420 640 | Fax.: + 351 282 417 400

E-mail: ilda@triumfante.com

www.triumfante.com

SHIPPING AGENT:

PEDRO BENTO DE AZEVEDO, SUCRS, Lda.

Established 1867

Cais de Comércio e Turismo de Portimão

8500 Portimão - Portugal

Tel.: + 351 282 410 860/5

Fax: + 351 282 410 869

E-mail: pbazevedo@mail.telepac.pt

General manager:

Mr. Joao Azevedo

Mobile: + 351 917 206 501

Agency Dept: Mr. Luis Sousa

Mobile: + 351 917 646 546

TRANSPORT:

Eva Bus

Tel.: + 351 282 400 610 | Fax: + 351 282 412 222

E-mail: eugenia@eva-bus.com

www.eva-bus.com

Transol - Transportes e Turismo, SA

Rua Proj. Caldeira do Moinho, Edifício Abicada, lj. 5

8500 - 726 Portimão - Algarve - Portugal

Tel.: + 351 282 450 460 | Fax: + 351 282 475 511

E-mail: reservas@transol.pt

www.transol.pt

INCOMING TRAVEL AGENCIES/EXCURSIONS:

Abreu Faro - DMC

Av. da República, 124

8000-079 Faro - Algarve - Portugal

Tel.: + 351 289 870 900 | Fax.: +351 289 870 990

E-mail: dmcportugal.faro@abreu.pt

www.abreu.pt

CREDITS:

Ownership: Portimão Municipal Council | Published by: Portimão Urbis | Coordination: Portimão Urbis / The Division of Tourism and the Information and Public Relations Office of Portimão Municipal Council | Design, Graphics and Layout: Efigie - Agência de Imagem e Comunicação | Translation: Inpokulis | Photography: Portimão Municipal Council Archive / Filipe da Palma and VEDOISPRO / Miguel Veterano | Printing: Efigie - Agência de Imagem e Comunicação | Information: Portimão Tourist Office, Avenida Zeca Afonso, Tel: +351 282 470 717, Fax: +351 282 410 445, E-mail: info@visitportimao.com | March 2010

 **visitportimao.com**

